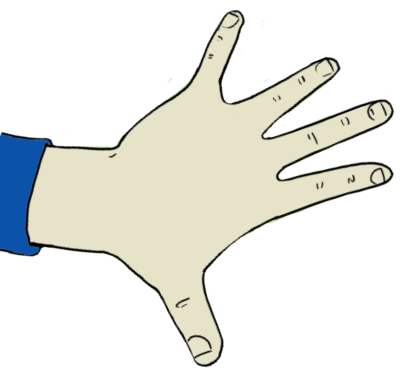


Trees are Cool 1

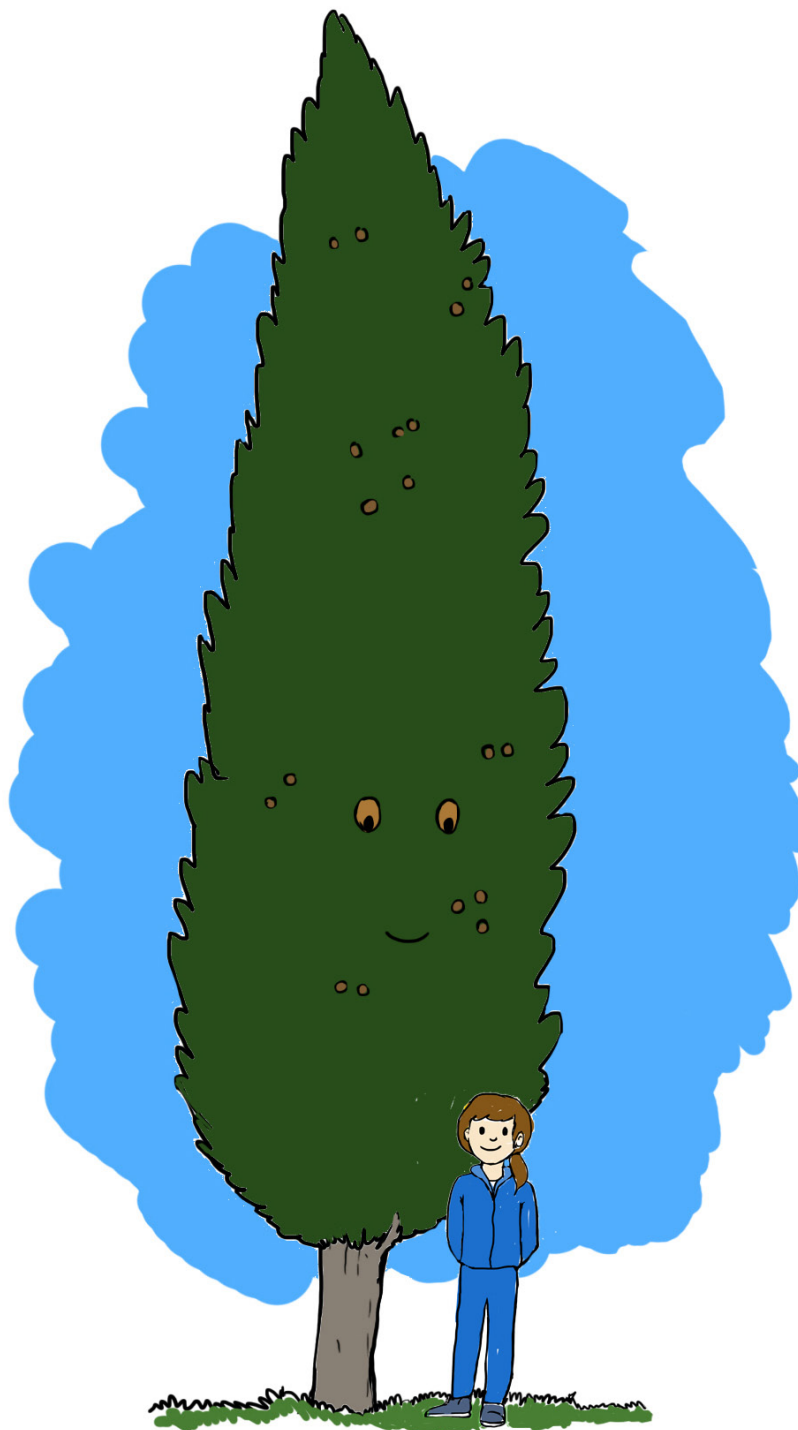


My new friend



You have just
made a new
friend.
A special
friend.
A tree!

What are
you going to
learn about
your new
friend?



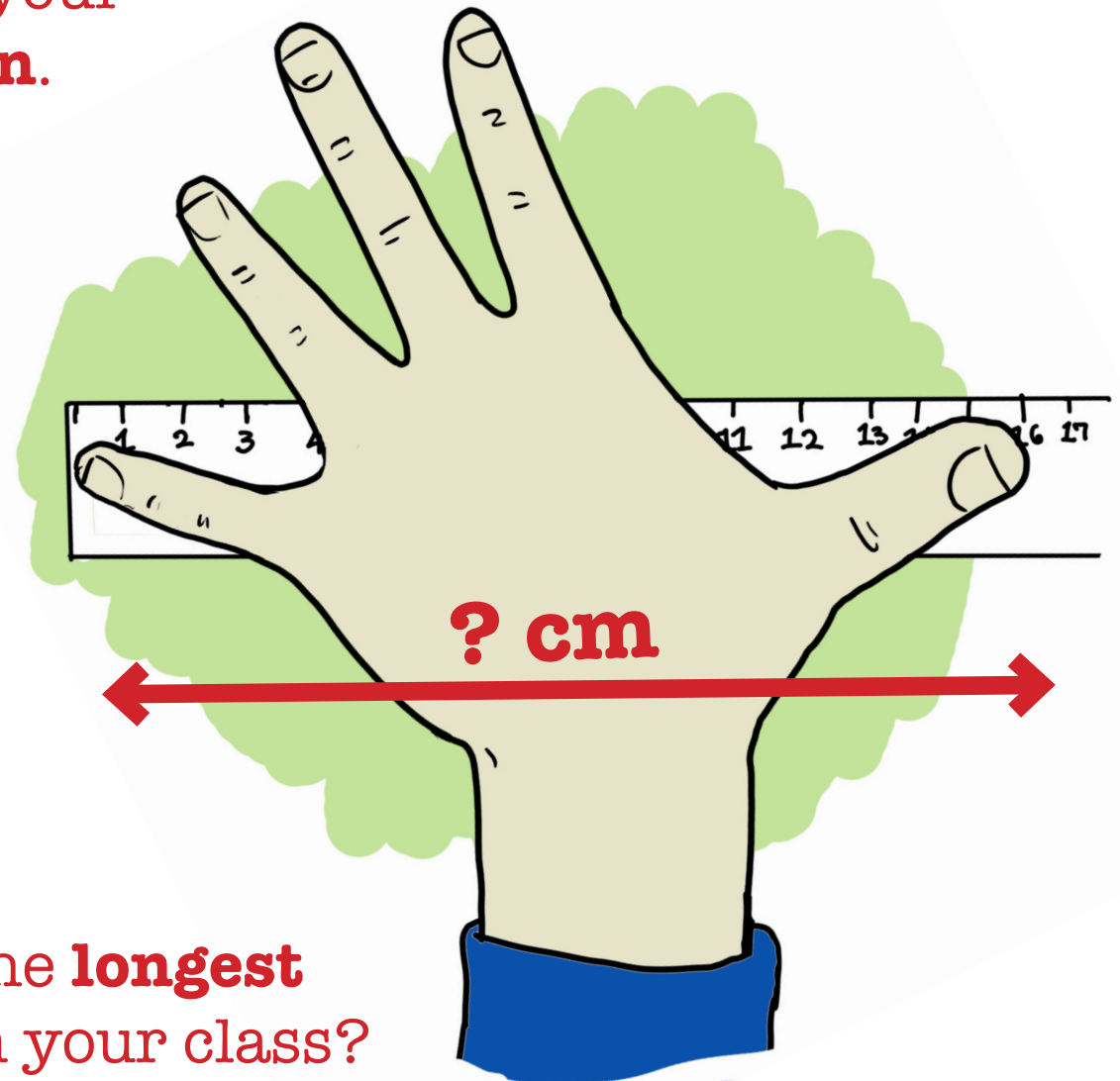
Let us find the
circumference
of your tree.

Then we'll find
its **height**.

First let's find
the **length**
of our
hand span.

Your hand
span is the
length from
the tip of
your thumb
to the tip of
your pinkie.

Here's an easy
way to find your
hand span.

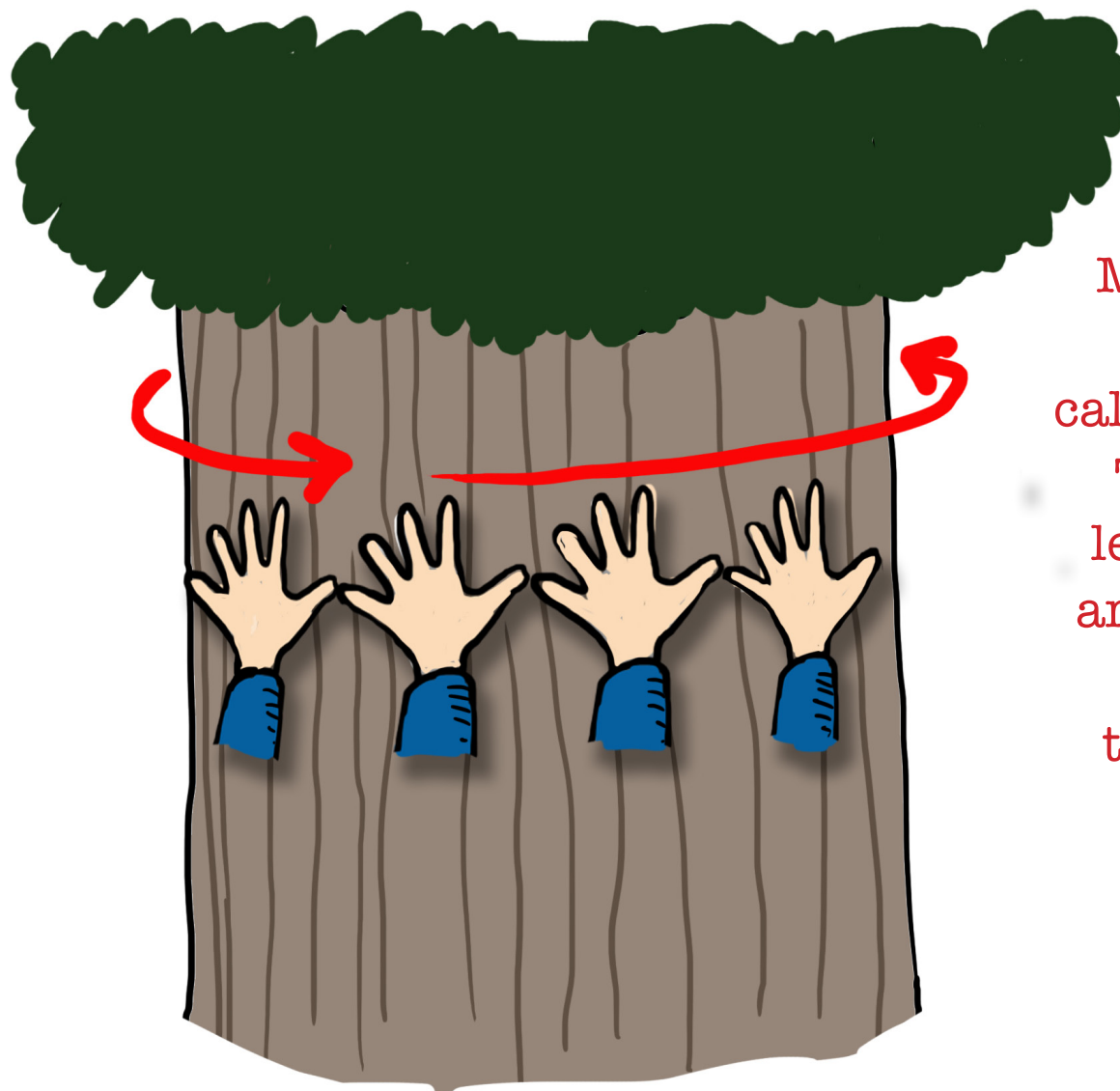


Who has the **longest**
hand span in your class?
Who has the **shortest**
hand span?

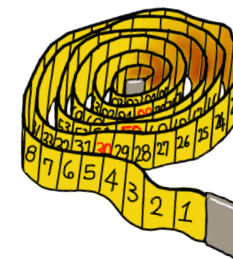
Walk round
your tree
and **measure**
the trunk
with your
hand spans.

How many
hand spans
did it take?

Can you
work out the
total length
around your
tree trunk?



Measuring with
hand spans is
called an **estimate**.
To get the real
length, measure
around the trunk
again but this
time use a **tape**
measure.



The length around the
trunk is called the
circumference.

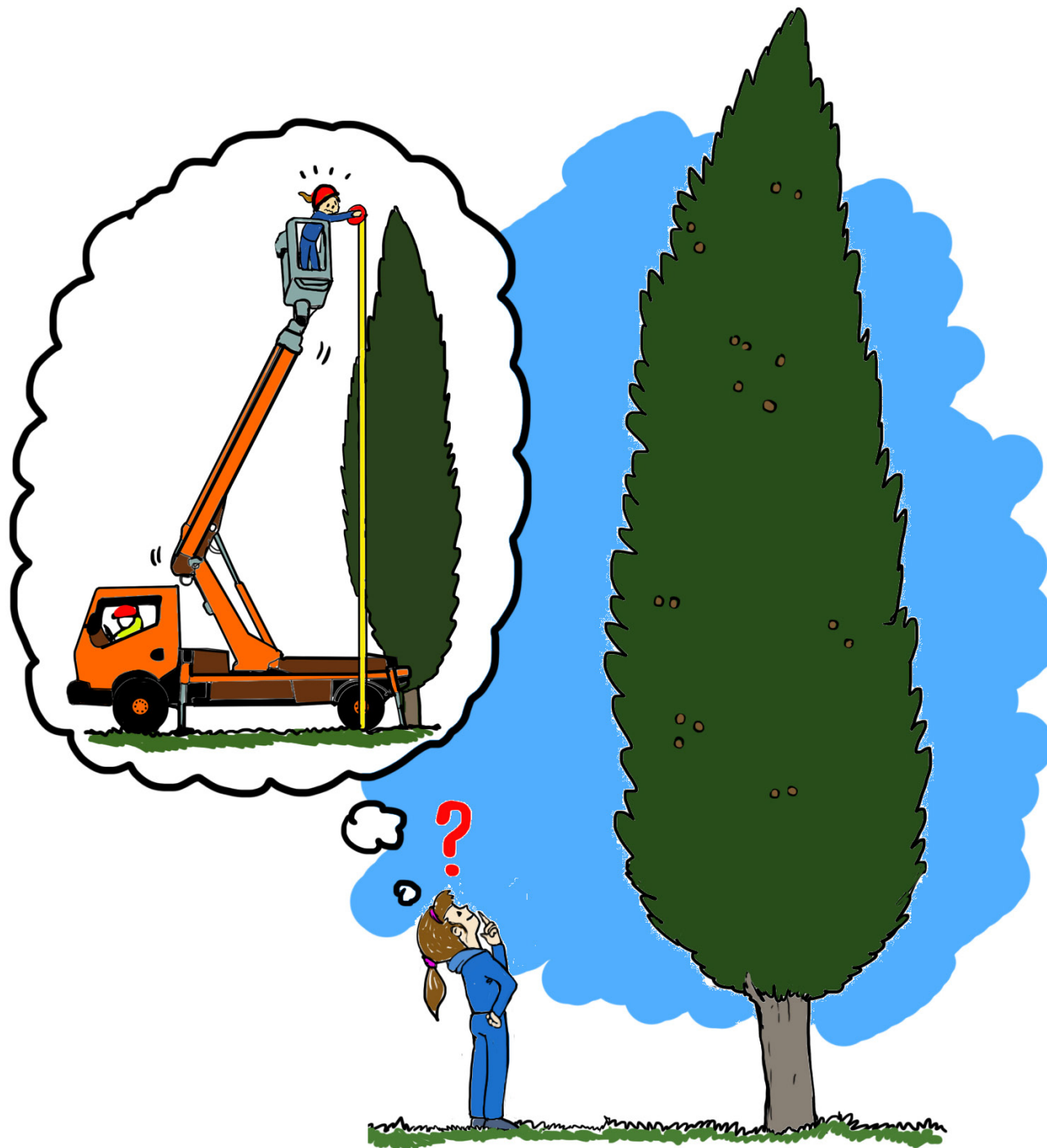
Did your answers
match?

We know
the length
around the
tree trunk.

What about
the **height** of
the tree?

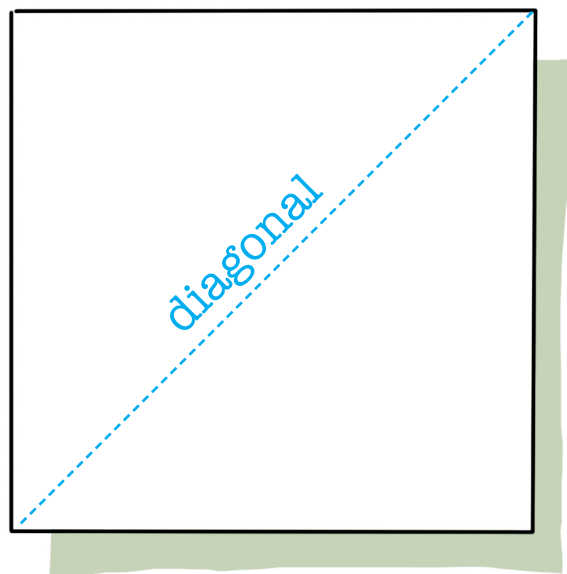
How are
we going to
measure
that?

It's easy!



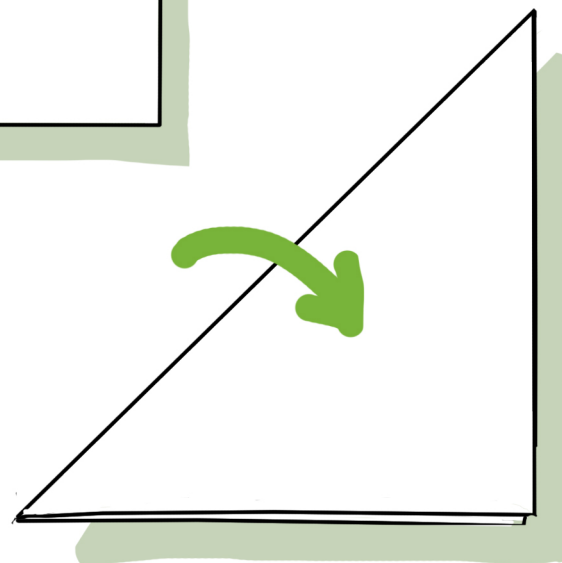
All you need
is a piece
of card and
a long tape
measure.*

You need a **square** piece
of card about 20cm.



Fold it along its
diagonal.

Tape or glue the
sides together to
make a **triangle**

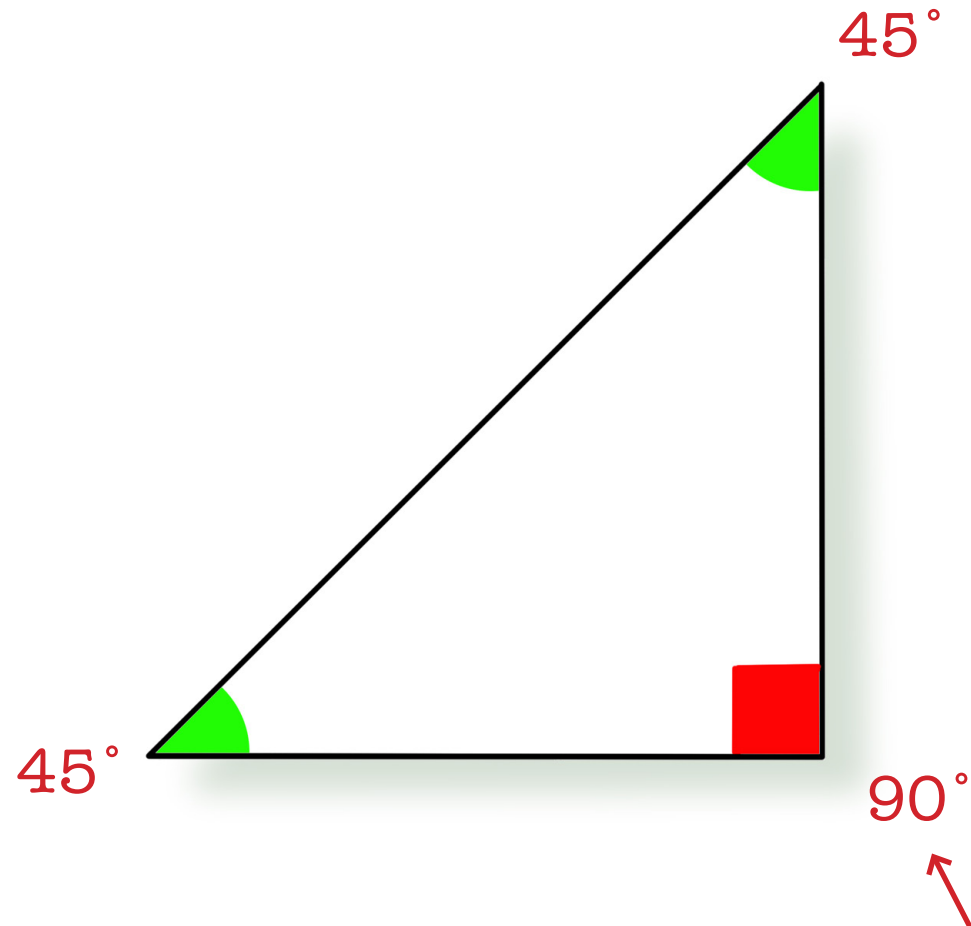


This is a **clinometer**. It will help
you find how tall your tree is.

*Or a trundle
wheel if it's
a really tall
tree!



Your clinometer is a special kind of triangle. It has a **right angle** in the bottom corner, and two equal angles at the other corners.

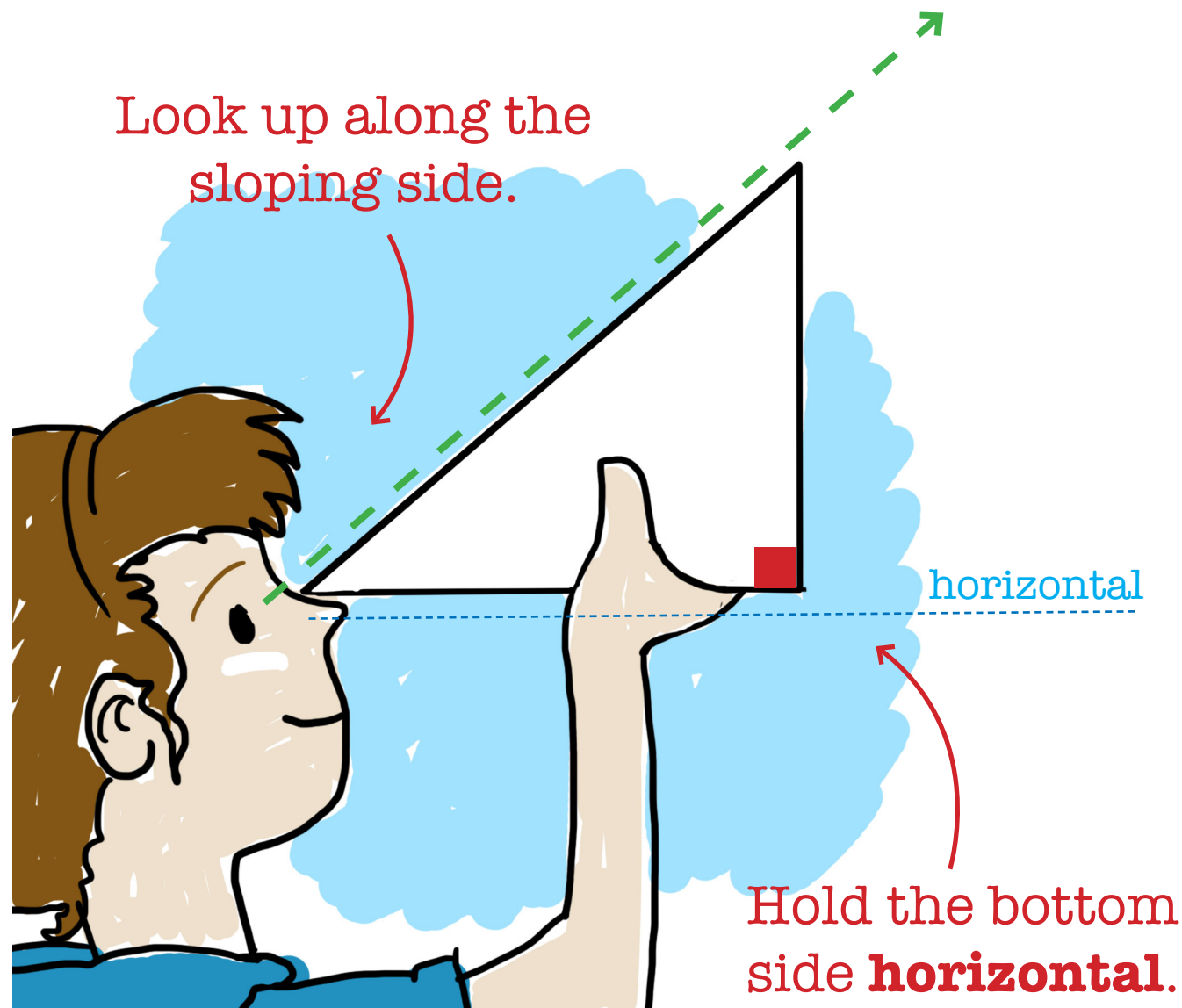


This is called a **right angle**

Here's how
to use your
special tool.

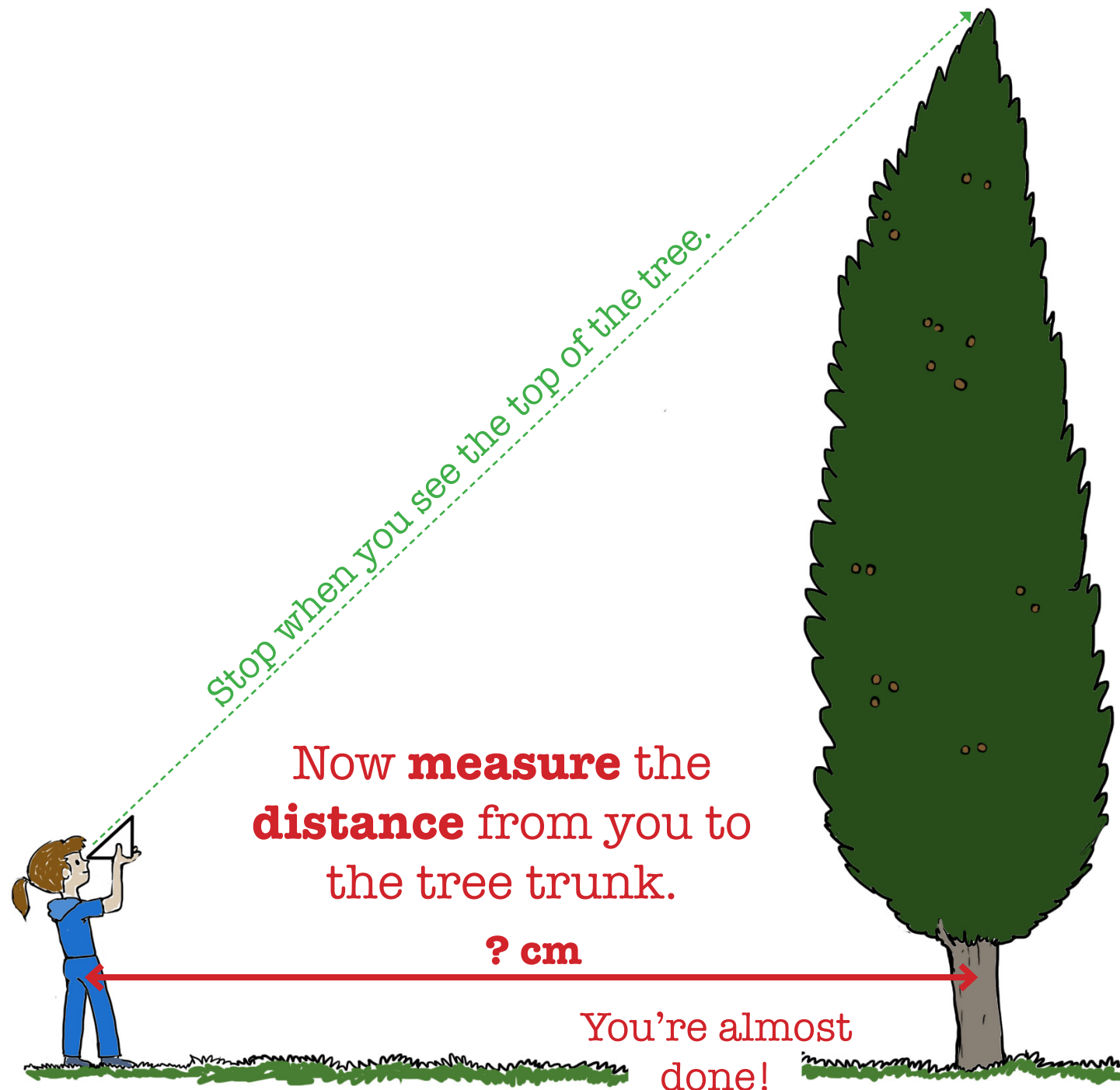
Hold the
clinometer
up to your
face, like the
girl in the
picture.

Make sure
the right
angle is at
the bottom of
the triangle.



Now walk away from your tree until you can see **the top of the tree** along the sloping side of your clinometer.

When you do, stop right there!



Just one
last bit of
measure.

Add **your own height**
to the distance you
measured.

Well done!
Now you
know some
secrets about
your special
tree friend!

And that's how
tall your tree is!





www.birdlifemalta.org

© BirdLife Malta